

GAMME

# MOBILIER

# URBAIN

- Nuancier p.222 à 223
- Cadettes p.224 à 225
- Banquettes p.226
- Plots p.227
- Plots en démoulage immédiat P.228
- Couvertine P.229

## — NUANCIER

Les granulats et les minéraux étant d'origine naturelle, de légères variations de teintes peuvent être observées par rapport aux visuels présentés. Certaines teintes de granulats peuvent être modifiées par l'impression. Visuels non contractuels.

### GAMME SABLÉE

**PYRÉNÉES - CG\***



**SAÔNE - CG\***



**AUVERGNE - CG\***



**MONT BLANC - CB\***



**VERCORS - CB\***



**SAINT GEORGES - CB\***



**ALPILLES - CB\***



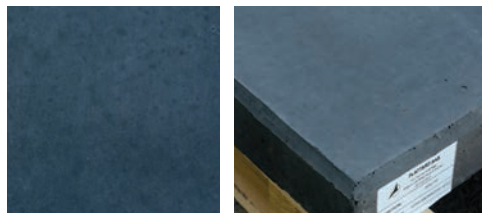
# MOBILIER URBAIN

## GAMME BRUTE

GRIS - CG\*



ANTHRACITE - CG\*



BLANC - CB\*

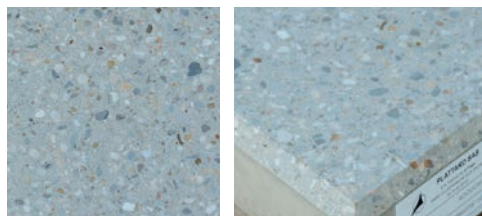


## GAMME ADOUCIE

ÉMERAUDE - CG\*



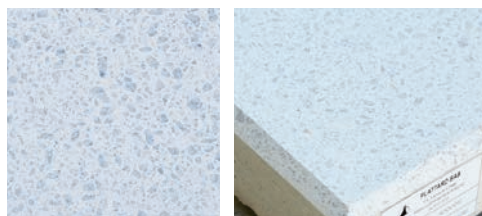
DRAVITE - CG\*



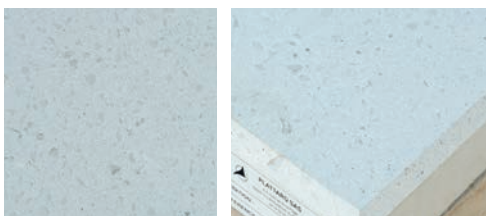
TOURMALINE - CG\*



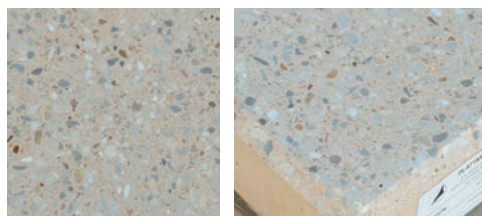
DIAMANT - CB\*



OPALE - CB\*



TOPAZE - CB\*



CORAIL - CB\*

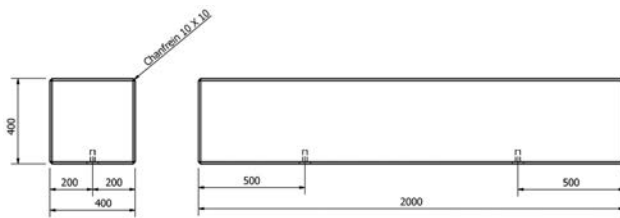


\*CG : Ciment gris  
\*CB : Ciment blanc

## — CADETTES

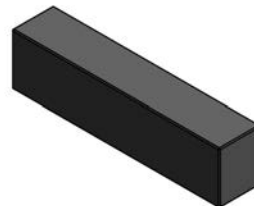
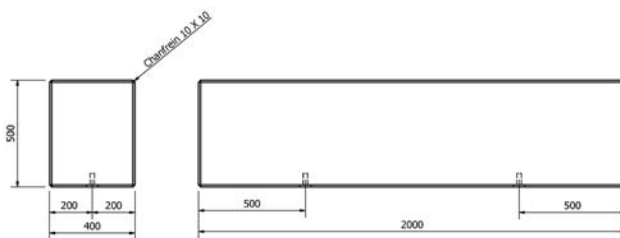
### CADETTES

CADETTE 40 X 40 X 200



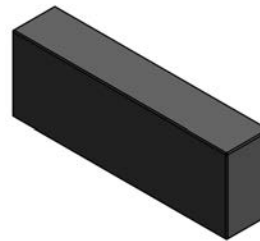
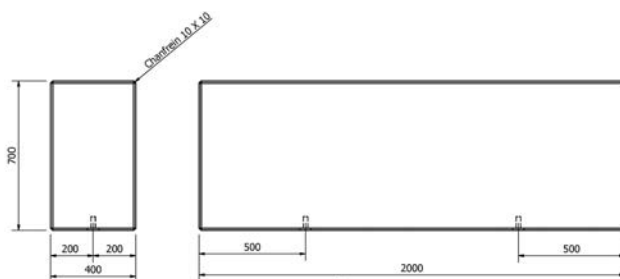
• Poids : 766 kg

CADETTE 40 X 50 X 200



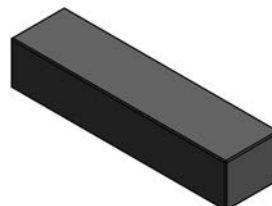
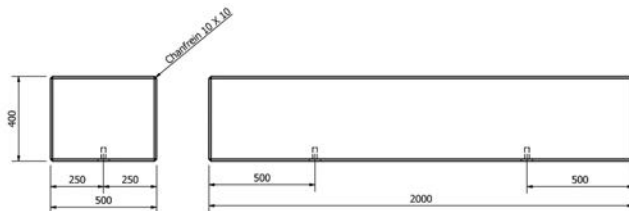
• Poids : 958 kg

CADETTE 40 X 70 X 200



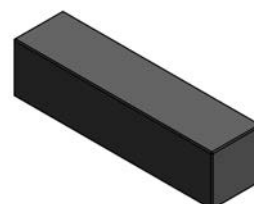
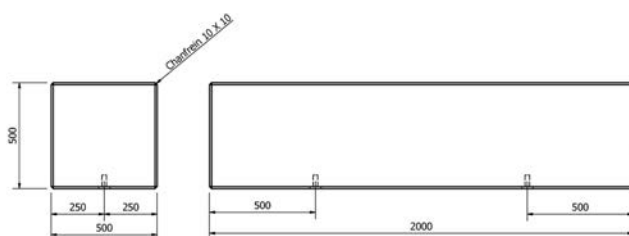
• Poids : 1342 kg

CADETTE 50 X 40 X 200



• Poids : 958 kg

CADETTE 50 X 50 X 200



• Poids : 1198 kg

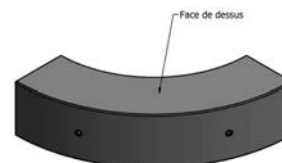
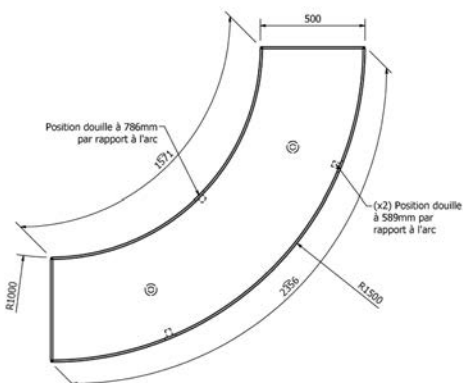
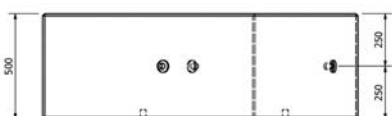
Conditionnement sur palettes bois consignées.

# MOBILIER URBAIN

## CADETTES

### CADETTES

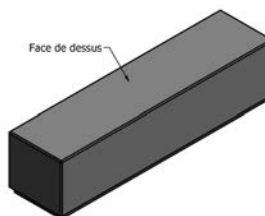
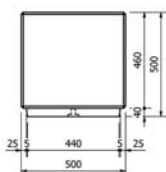
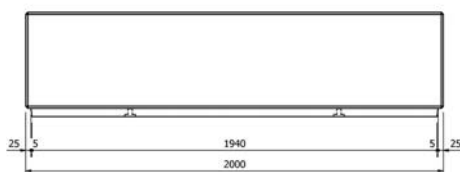
#### CADETTE 50 X 50 COURBE



• Poids : 1163 kg

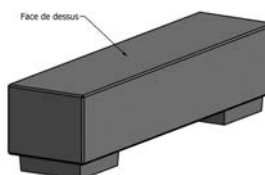
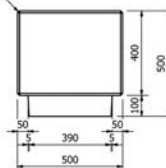
#### CADETTE 50 X 50

##### 1 PIED



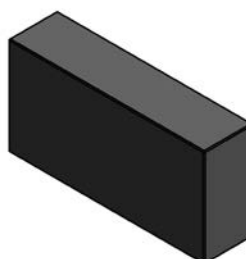
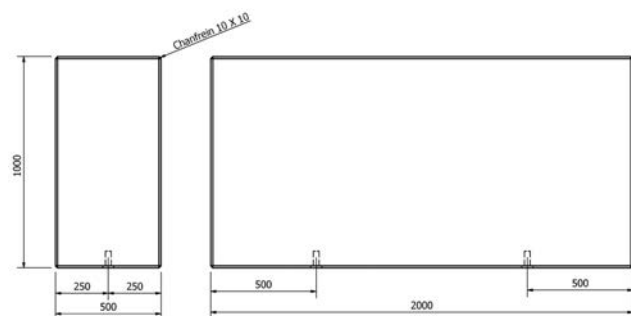
• Poids : 1186 kg

##### 2 PIEDS



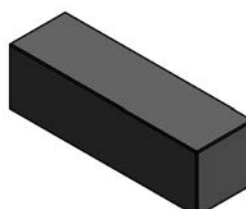
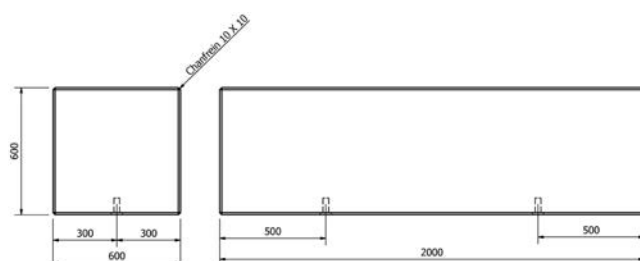
• Poids : 1034 kg

#### CADETTE 50 X 100 X 200



• Poids : 2398 kg

#### CADETTE 60 X 60 X 200



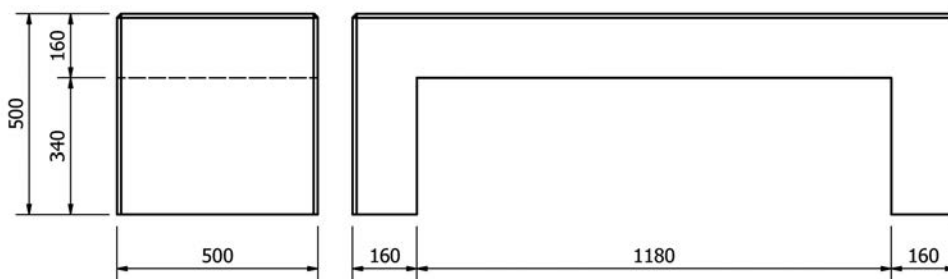
• Poids : 1726 kg

## —• BANQUETTES

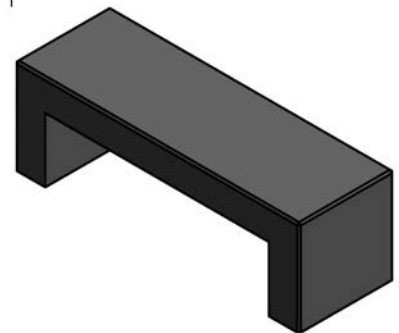
### BANQUETTE

- Chanfrein 10x10 sur arrêtes visibles

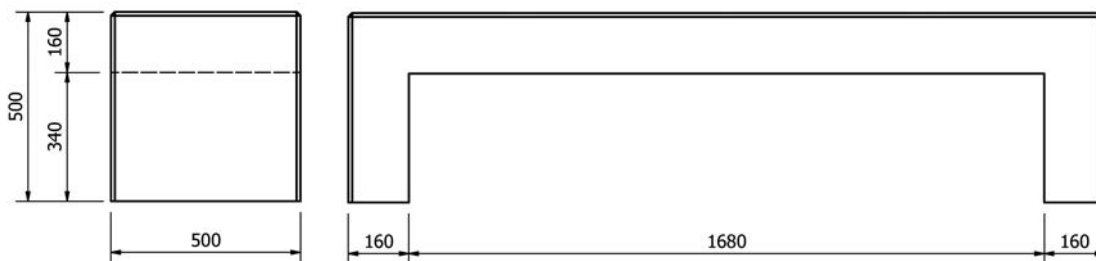
#### BANQUETTE 50 X 50 X 150



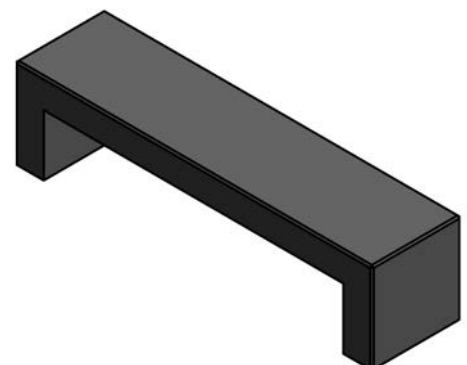
- Poids : 418 kg



#### BANQUETTE 50 X 50 X 200



- Poids : 514 kg

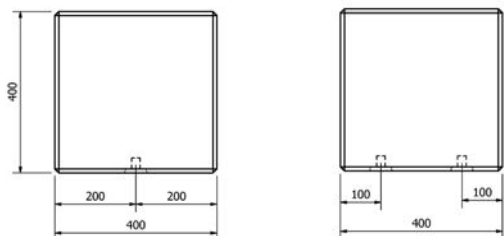


# MOBILIER URBAIN

## PLOTS

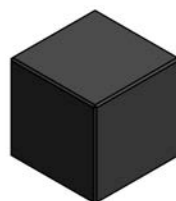
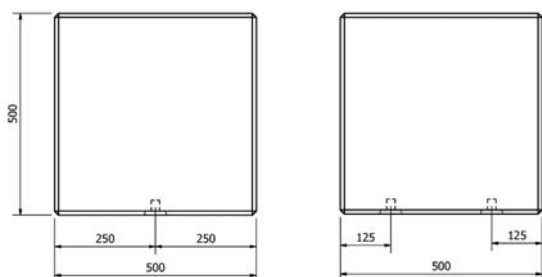
### PLOTS

#### PLOT 40 X 40 X 40



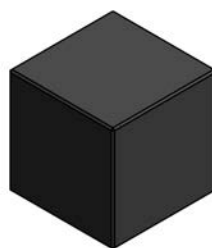
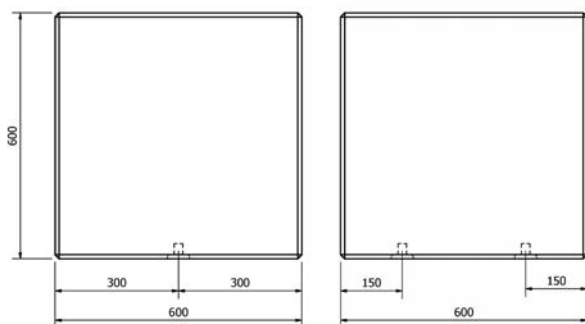
• Poids : 155 kg

#### PLOT 50 X 50 X 50



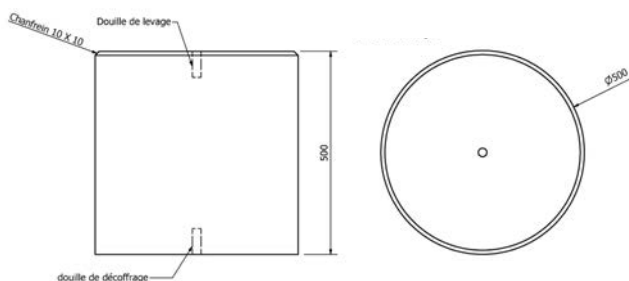
• Poids : 300 kg

#### PLOT 60 X 60 X 60



• Poids : 520 kg

#### PLOT Ø 50 X 50



• Poids : 235 kg

• Manutention : 1 douille de levage RD 12

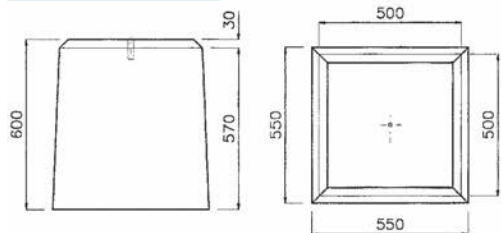


# MOBILIER URBAIN

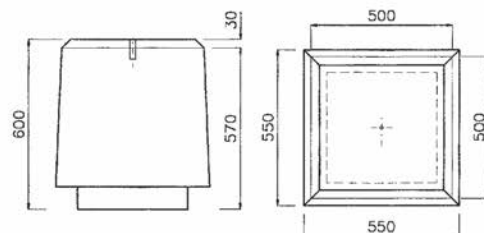
## — PLOTS EN DÉMOULAGE IMMÉDIAT

Se référer au nuancier voirie P180-181

### PLOTS PARKING



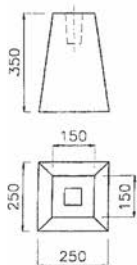
- Poids : 400 kg
- Manutention : 1 douille de levage RD16



- Poids : 370 kg
- Manutention : 1 douille de levage RD16

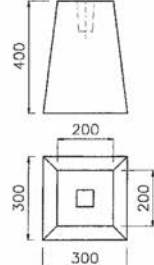
### DÉS

#### DÉS PM



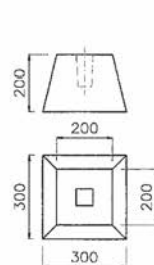
- Poids : 37 kg

#### DÉS GM



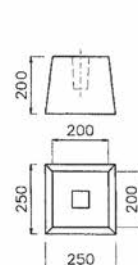
- Poids : 60 kg

#### DÉS MA



- Poids : 30 kg

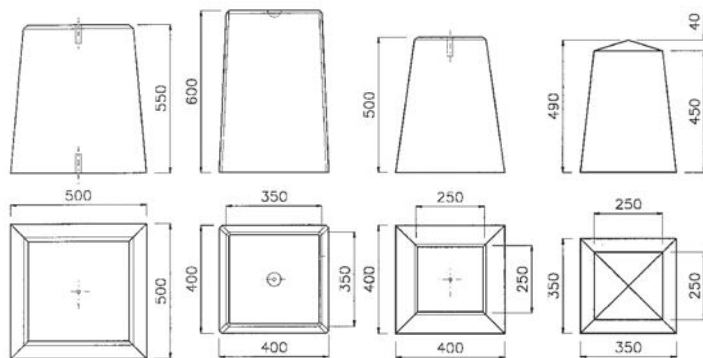
#### DÉS MB



- Poids : 25 kg

1 réservation pour scellement 60x60x110 sur chaque modèle de dés.

### PLOTS PYRAMIDAUX

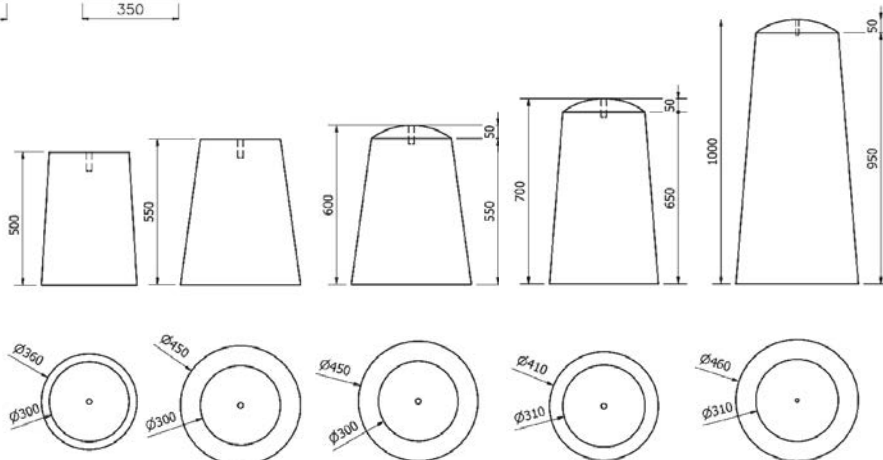


Référence	Hauteur	Poids	Levage
DÉS 356	550	280 kg	1 douille RD12
DÉS 357	600	200 kg	1 douille RD12
DÉS 354	500	130 kg	1 douille RD12
DÉS 358	490	110 kg	1 douille RD12

### PLOTS TRONCONIQUES

- Différentes finitions : lisse, colorée, lavée, sablée et adoucie.

Référence	Hauteur	Poids	Levage
PLOT 351	500	115 kg	1 douille RD12
PLOT 352	550	140 kg	1 douille RD12
PLOT 353	600	140 kg	1 douille RD12
PLOT 355	700	170 kg	1 douille RD12
PLOT 400	1000	290 kg	1 douille RD12



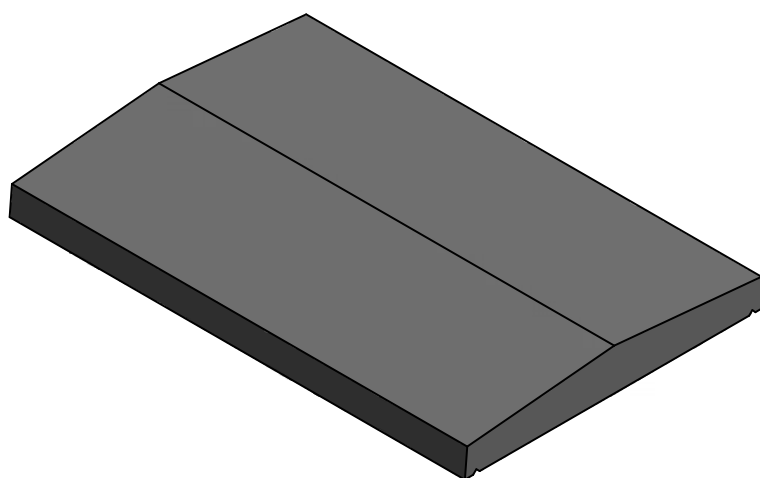
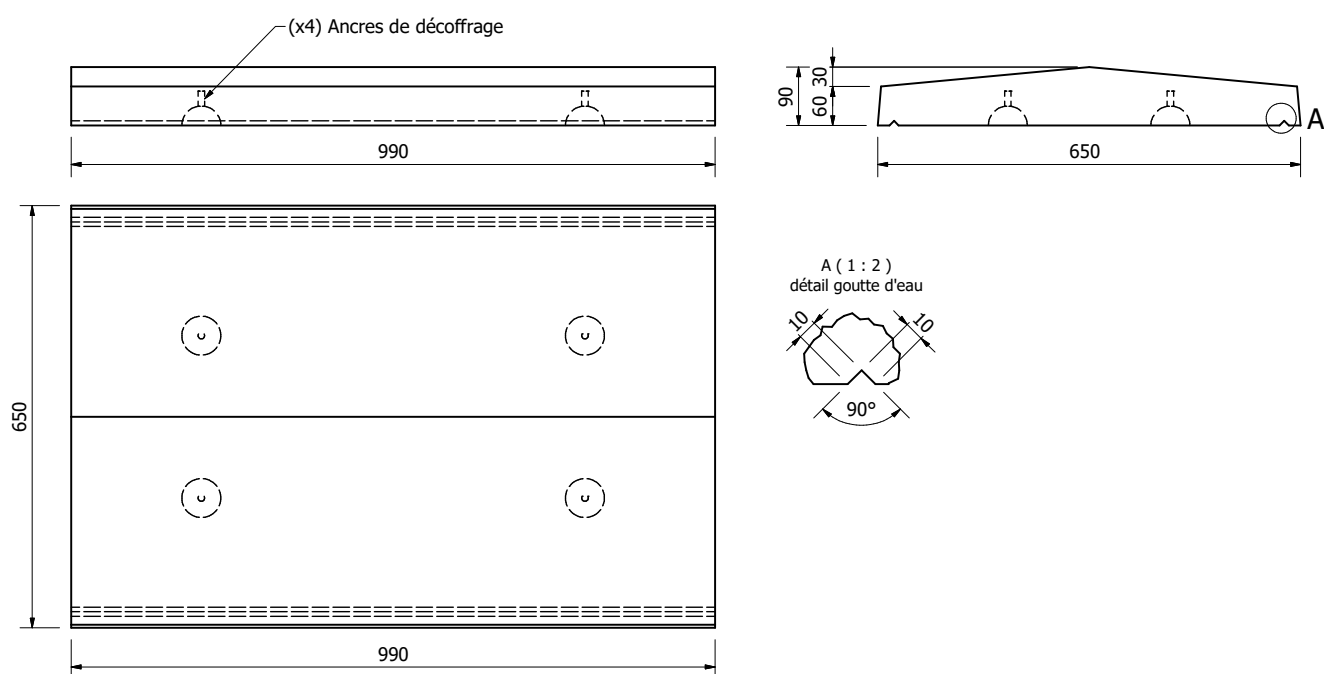
Conditionnement sur palettes bois consignées.



# MOBILIER URBAIN

## COUVERTINE

### COUVERTINE LARGEUR 650



- Poids : 114 kg
- Manutention à la pince
- Fabrication démoulage différé